

CHASING

EXPLORE THE UNEXPLORED

CHASING M2 PRO

Hybrid power supply
Stronger power
More accessories



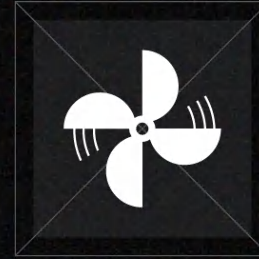
Light Industrial grade underwater ROV for
professional and enterprise customers.



For product information, please refer to the actual products on the market. For the latest information, please refer to the official website: www.chasing.com

CHASING M2 Pro

is a professional underwater ROV designed for professional users and industrial applications. M2 Pro has 8 Vectored Thrusters layout which allows OMNI movement in all directions. Compared to the CHASING M2, the M2 Pro motor has been upgraded by 50%. The Maximum Depth is 150 meters (492 ft) and the maximum horizontal radius is 400 meters (1312 ft). M2 pro support AC and battery hybrid power supply to achieve unlimited battery life. Not only compatible with sophisticated attachments such as Grabber Claw, Floodlight and laser scaler etc, but also compatible with Control Console (High-brightness Screen), Docking station, USBL underwater positioning, 700Wh battery, Multibeam sonar, Auxiliary Camera and other M2 Pro Exclusive Enhanced Accessories. CHASING M2 Pro offers a built in 4K/ 1080p and 12 megapixel EIS image stabilization camera, 4000 lumen LED lights, removable battery and removable Micro SD memory card. The aluminum alloy compact body (weighs less than 6KG / 13lbs) allows single person operation and Quick-Deployment in 3 minutes. The CHASING M2 Pro is your portable, easy use and reliable light industrial underwater ROV.



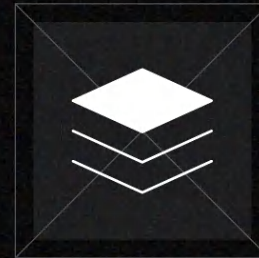
Motor upgraded
Stronger power



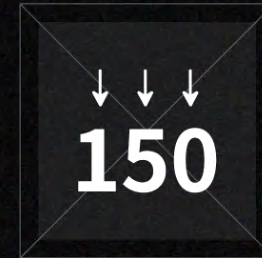
4 hours
battery life



Unlimited battery life
with AC power supply



USBL underwater positioning,
Multibeam sonar and
more accessories



Maximum dive depth
150 meters (492 ft)

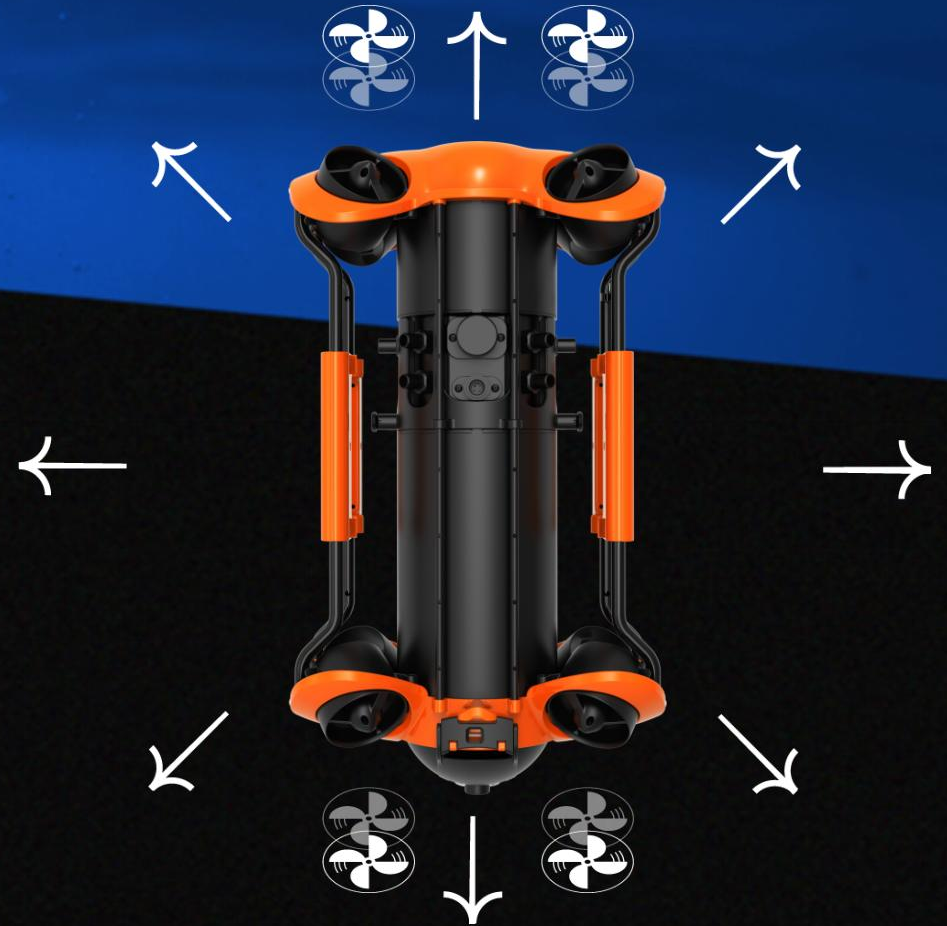


4K+EIS Image
Stabilization,
F2.8 Aperture

Motor upgraded Stronger power

→ 8 Vectored-Thrusters Layout, Anti-Stuck Motor.

→ Single motor power 150W.



4 hours long battery life

The default 300Wh lithium battery , Optional 700Wh Replaceable Battery (support Hybrid power supply) will make your operation time unlimited.



  Optional



Long battery life with AC power supply

Support AC power supply (optional), Truly long-lasting battery life.



USBL underwater positioning, Multibeam sonar and **more accessories**

Control Console (High-brightness Screen), Docking station, USBL underwater positioning, 700Wh battery, Multibeam sonar, Auxiliary Camera and other M2 Pro Exclusive Enhanced Accessories

Multibeam sonar



Support model:
Blueprint
Oculus/M370S/M750D/M1200D
More models are expanding...

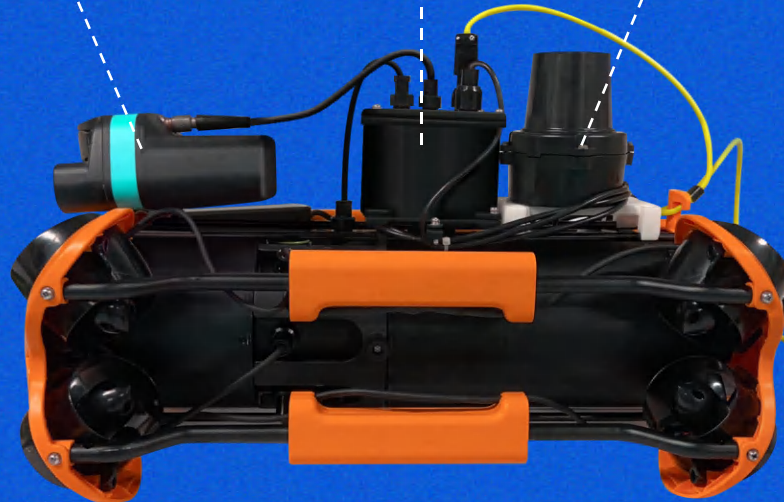
Docking station



USBL underwater positioning

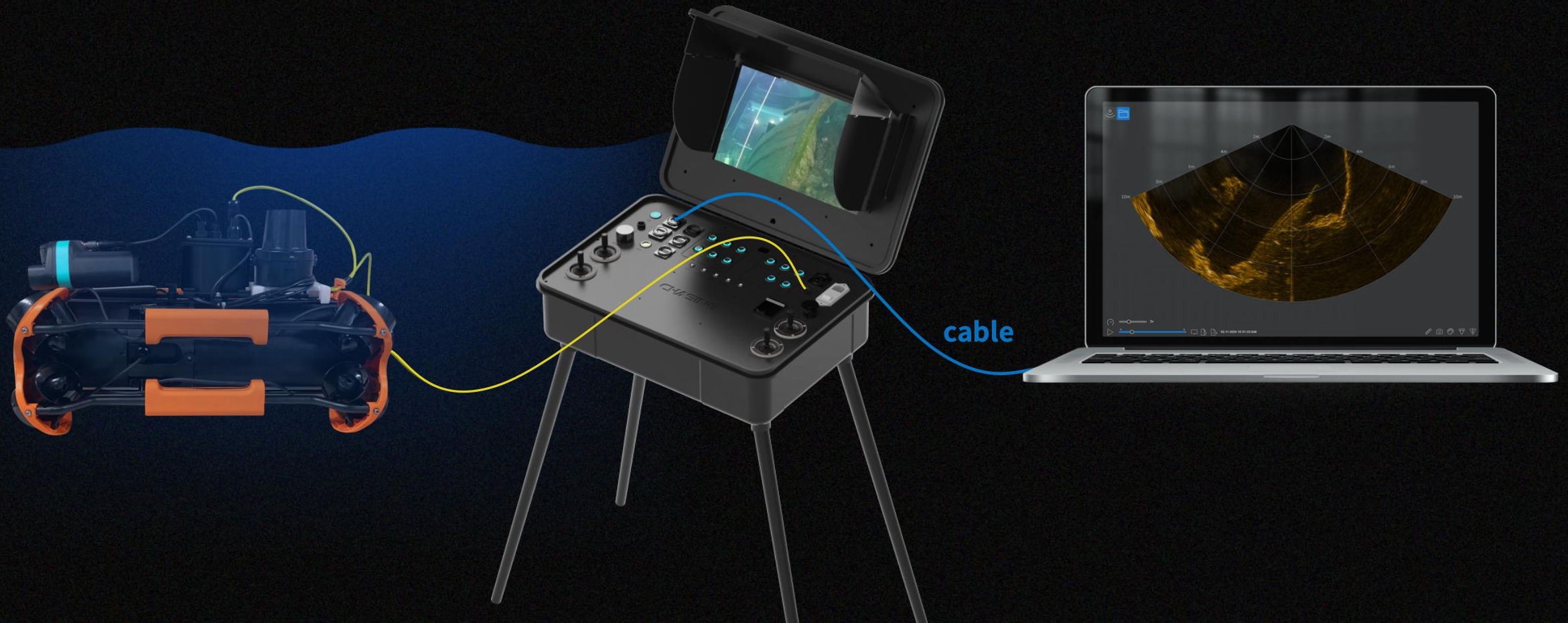


Support model:
Cerulean usbl sonar
More models are
expanding...

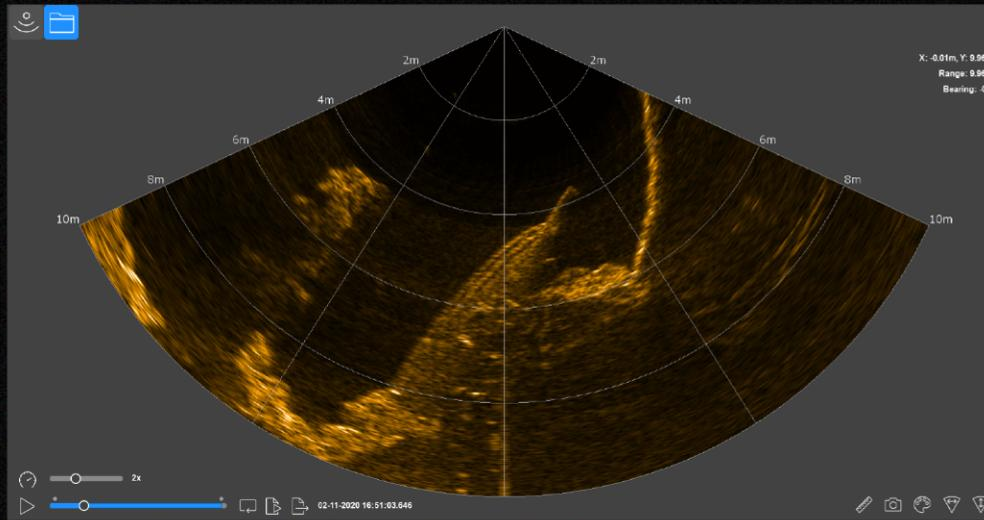


USBL underwater positioning, Multibeam sonar and **more accessories**

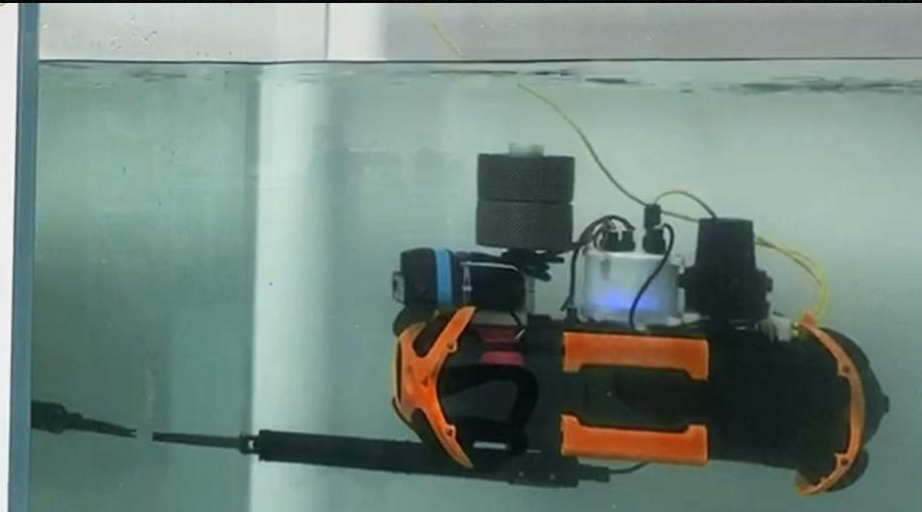
 Multibeam sonar



Multibeam sonar — ship

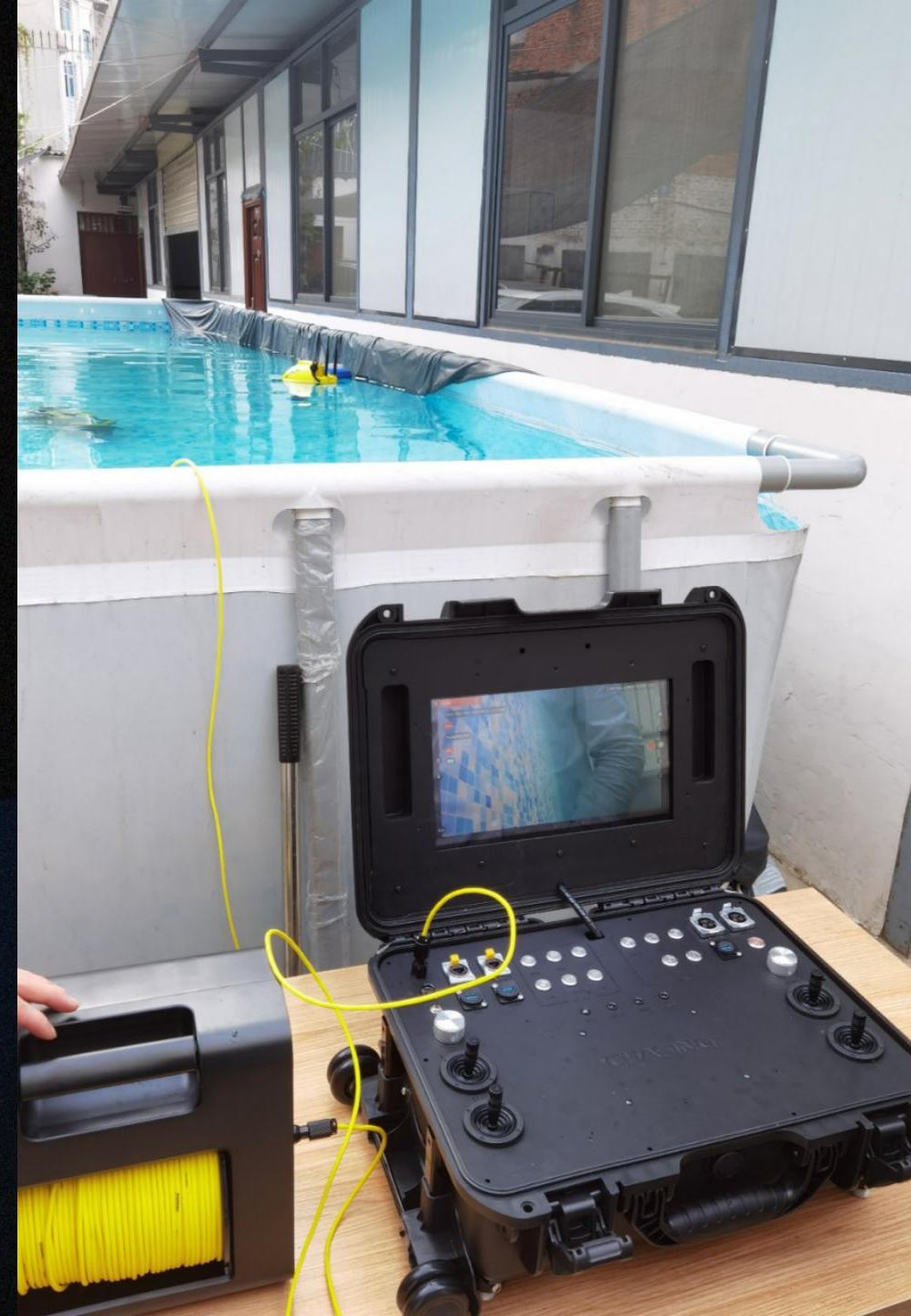


Multibeam sonar — test

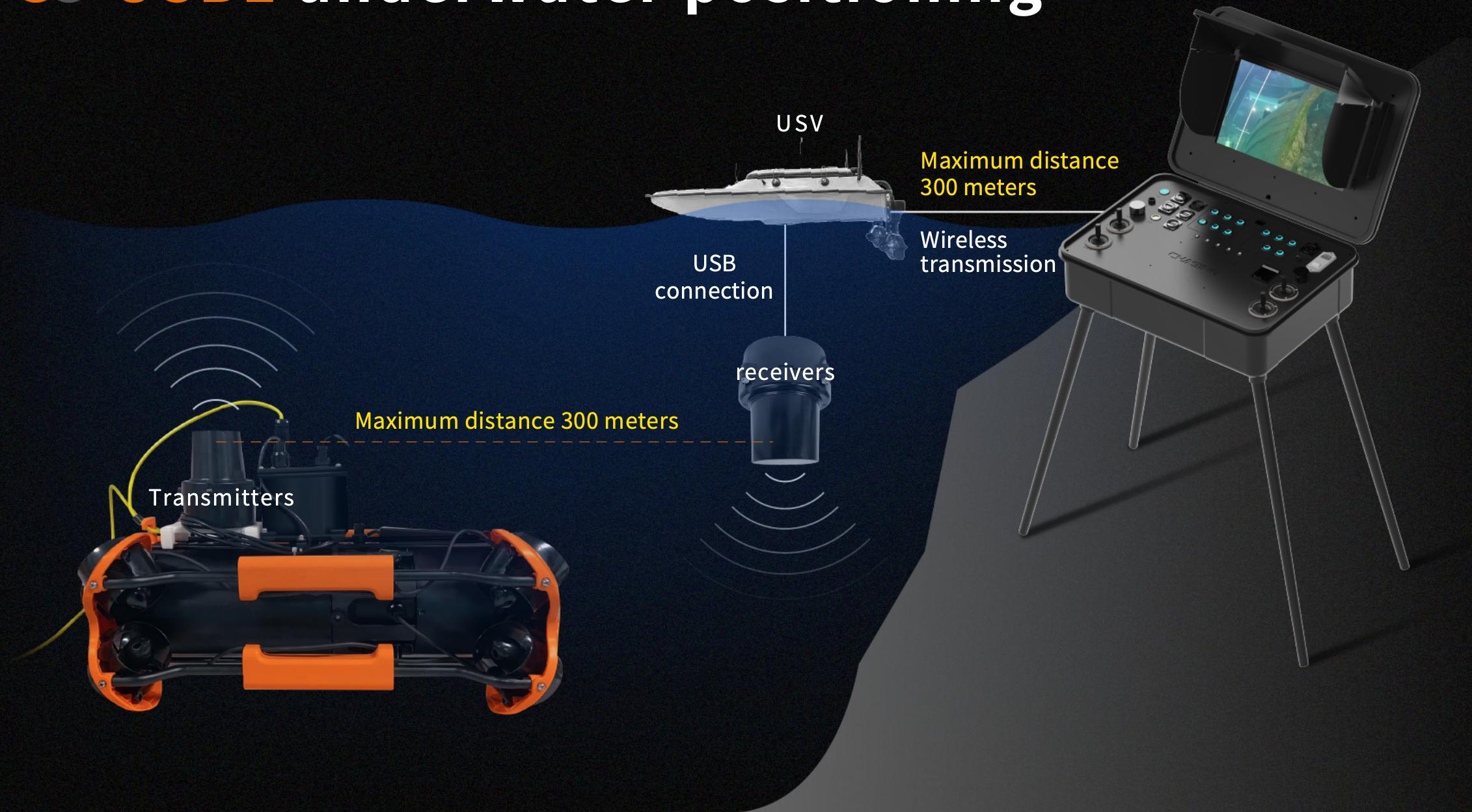


Control Console, be visible in sunlight

Size	484×375×178mm
Weight	≈ 8 Kg
Display	1920 x 1080,1000cd/m2
Operating temperature	-10°C ~ 45°C
Power supply	21.6 V
Interface	RJ45*2, USB 2.0*2, QC3.0 USB*1, AC Input*1, AC output to ROV*1



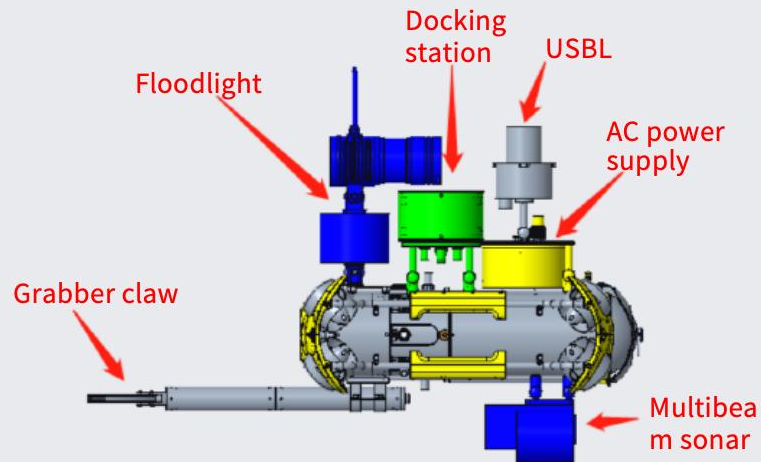
●● USBL underwater positioning



M2 PRO Exclusive Enhanced Accessories combination diagram

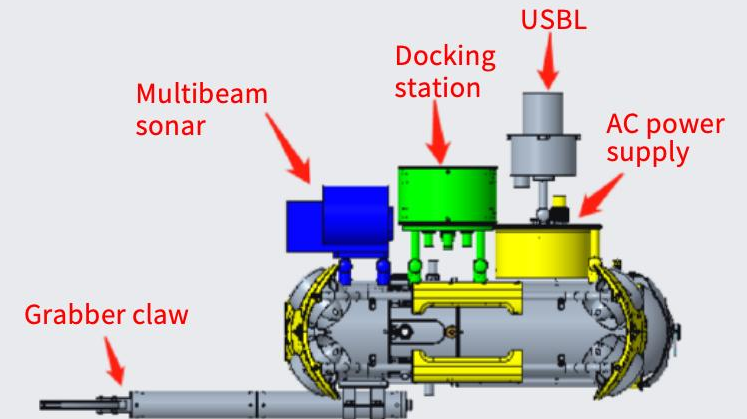
Combination 1

Floodlight
Docking station
USBL
AC power supply
Multibeam sonar
Grabber claw



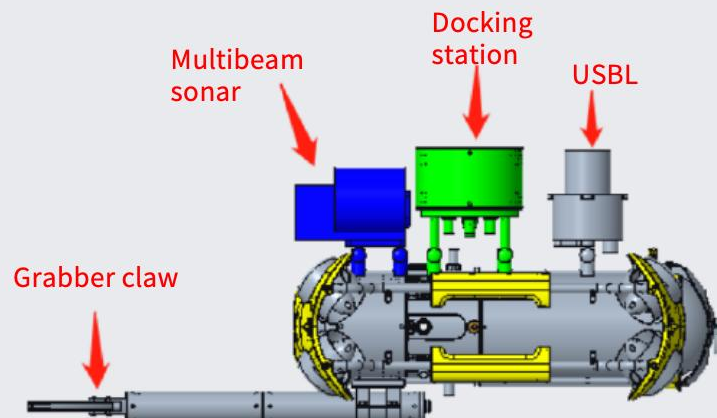
Combination 2

Docking station
USBL
AC power supply
Multibeam sonar
Grabber claw



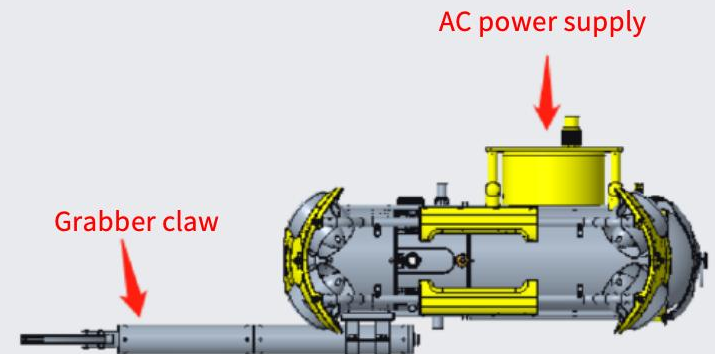
Combination 3

Docking station
USBL
Multibeam sonar
Grabber claw



Combination 4

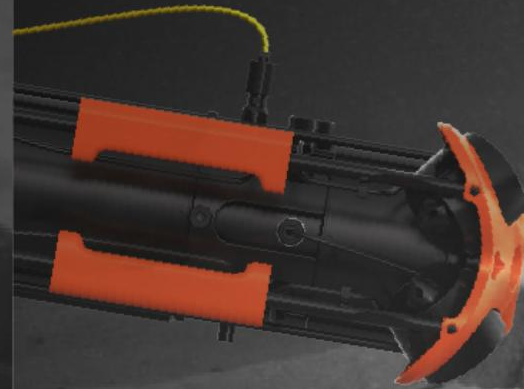
AC power supply
Grabber claw





Dive depth 150 meters (492 ft)

Explore more unknown



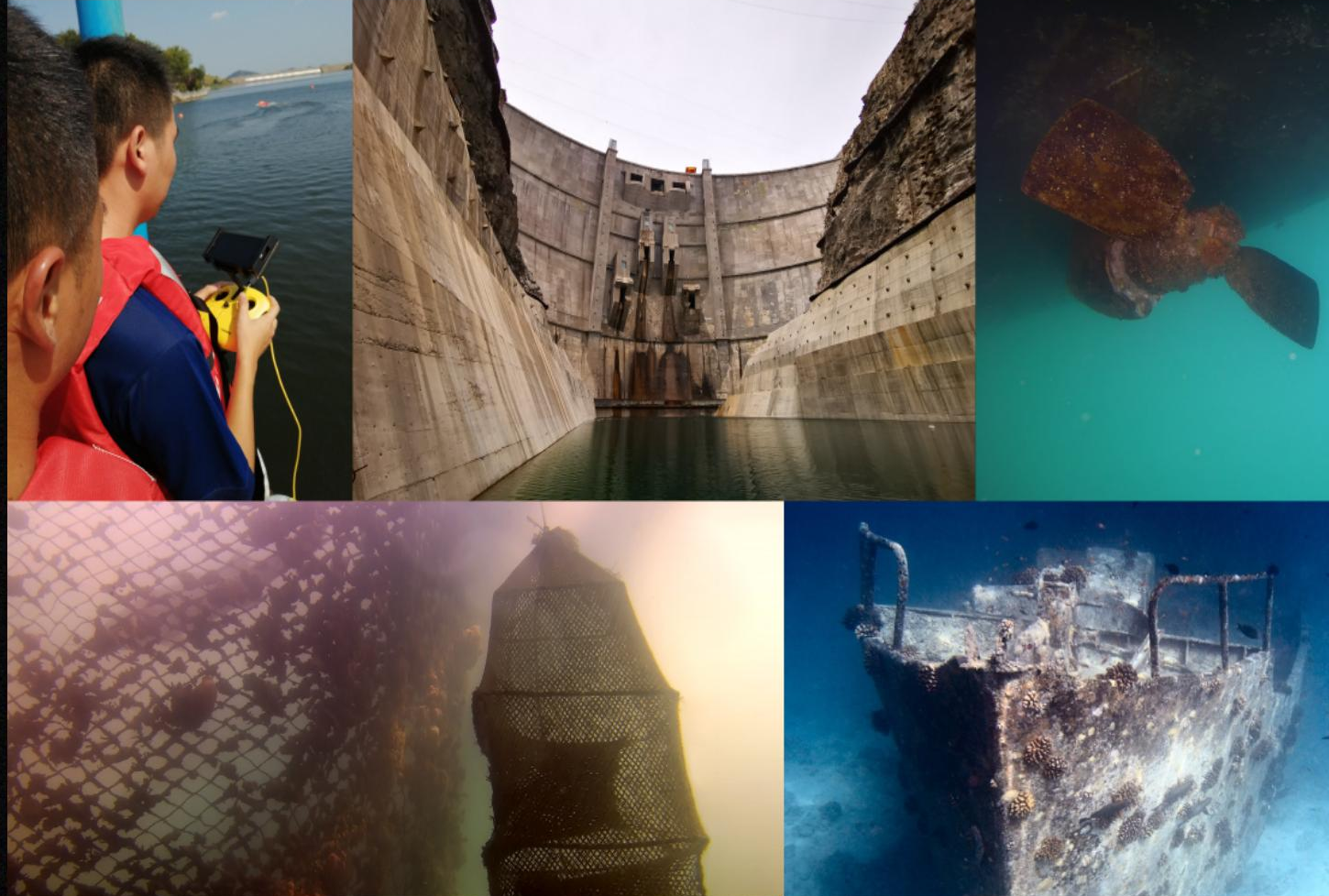
4K+EIS Image Stabilization, F2.8 Aperture



M2 Pro offers 4K and 1080p video and 12 megapixel photos. Equipped with 1/2.3" CMOS, EIS anti video-shake feature, with 4000 lumen LED lights to capture underwater details.

Applications

- Underwater search and rescue
- Water conservancy and hydropower inspection
- Scientific exploration
- Hull&Dock inspection
- Aquaculture inspection



Parameters

ROV

Size(mm)	480*267*165mm
Weight	≈5.7KG
Maximum Depth	150m
Runtime (Actual duration is subject to the App prompt)	4h
Battery Capacity	300Wh (Optional battery)
Operating Temperature	-10°C~45°C
Load(forward/upward/sideways)	3.9/3.2/3.0kg

Remote Controller

Size(mm)	160*155*125mm
Weight	685g
Battery capacity	2500mAh
Battery life	≥6H(Depend on working condition)
Wireless	Wi-Fi
Wired interface type	Lightning, Micro USB, USB-C
HDMI	Support
Phone/tablet clip	Supports up to 10 inches

Charger

Power	25.2V/8A
ROV charging time	2.5H
Controller charging time	2H

Camera

CMOS	1/2.3" CMOS
Aperture	F2.8
Focal scope	0.3m ~ ∞
ISO Range	100-6400
Field of View	150°
Maximum Image Resolution	12M
Image File Types	JPEG/DNG
Video resolution	4K: 3840×2160@25/30fps 1080P: 1920×1080@25/30/50/60/100/120fps
	Slow motion 4X: 1920×1080@30fps (120fps)
	Slow motion 8X: 1280×720@30fps (240fps)
Video Maximum Stream	60M
Video Type	MP4
SD Card (Standard)	128G

LED Lights

Brightness	2x2000LM
Color Temperature	5000K~5500K
CRI	85
Dimming	Three Gears

Sensor

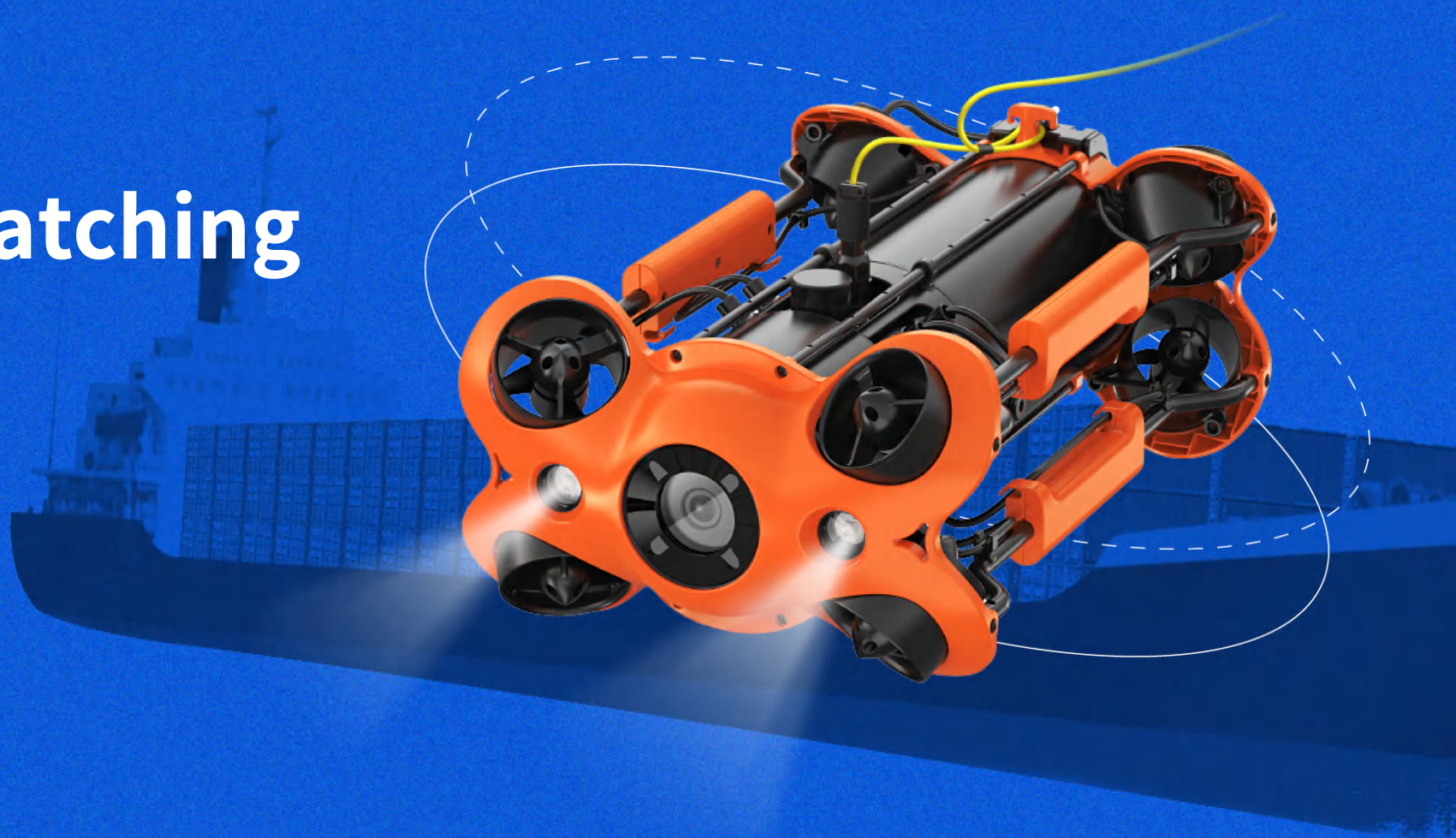
IMU	Three-axis gyroscope/acceleration/compass
Depth Sensor	< ±0.25m
Temperature Sensor	< ±2°C

For product information, please refer to the actual products on the market. For the latest information, please refer to the official website:www.chasing.com

CHASING

EXPLORE THE UNEXPLORED

Thanks For Watching



For product information, please refer to the actual products on the market. For the latest information, please refer to the official website: www.chasing.com