

CHASING

CHASING M2 PRO MAX

Industrial-Grade Underwater ROV



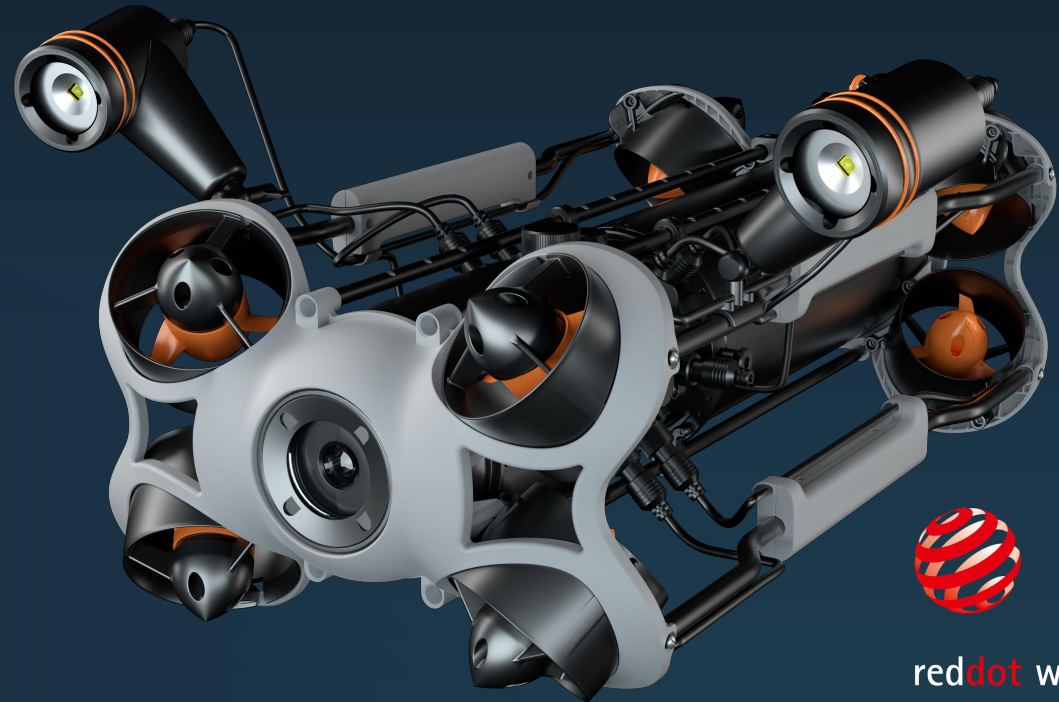
Easy | Powerful

CHASING M2 PRO MAX

is an industrial-grade underwater remote operated vehicle (ROV) designed for government and enterprise users. It is equipped with eight vectored thrusters, allowing 360-degree omnidirectional movements. The ROV can dive to 200 meters deepwater, and move around a maximum horizontal radius of 400 meters.

CHASING M2 PRO MAX adopts the quick assembly and disassembly technology, enabling tool-free quick assembly and disassembly of more than 20 accessories such as sonars, CHASING USBL KIT, and CHASING Water Sampler. In addition, CHASING M2 PRO MAX has an integration of five ports, which simplifies the installation of multiple accessories. Up to five accessories can be mounted at a time. The ROV is powered by the second-generation anti-stuck motor C-MOTOR 2.0, which has 30% more power for a better anti-stuck capability. The second-generation shore-based power supply system (C-SPSS) is an optional accessory. It adopts the battery compartment design, with 1500W upgraded output power, ensuring M2 PRO MAX constantly works at full power without an outage. The external 8000-lumen floodlights can achieve the best beam angle at 150°, which resolves the reflection of floating debris and clearly illuminates every detail.

CHASING M2 PRO MAX provides easier-to-use, more professional, and more reliable underwater solutions for various industrial applications, such as underwater emergency rescue, hull and dock inspection, aquaculture inspection, water conservancy and hydropower inspection, scientific exploration, and offshore wind power facility inspection.



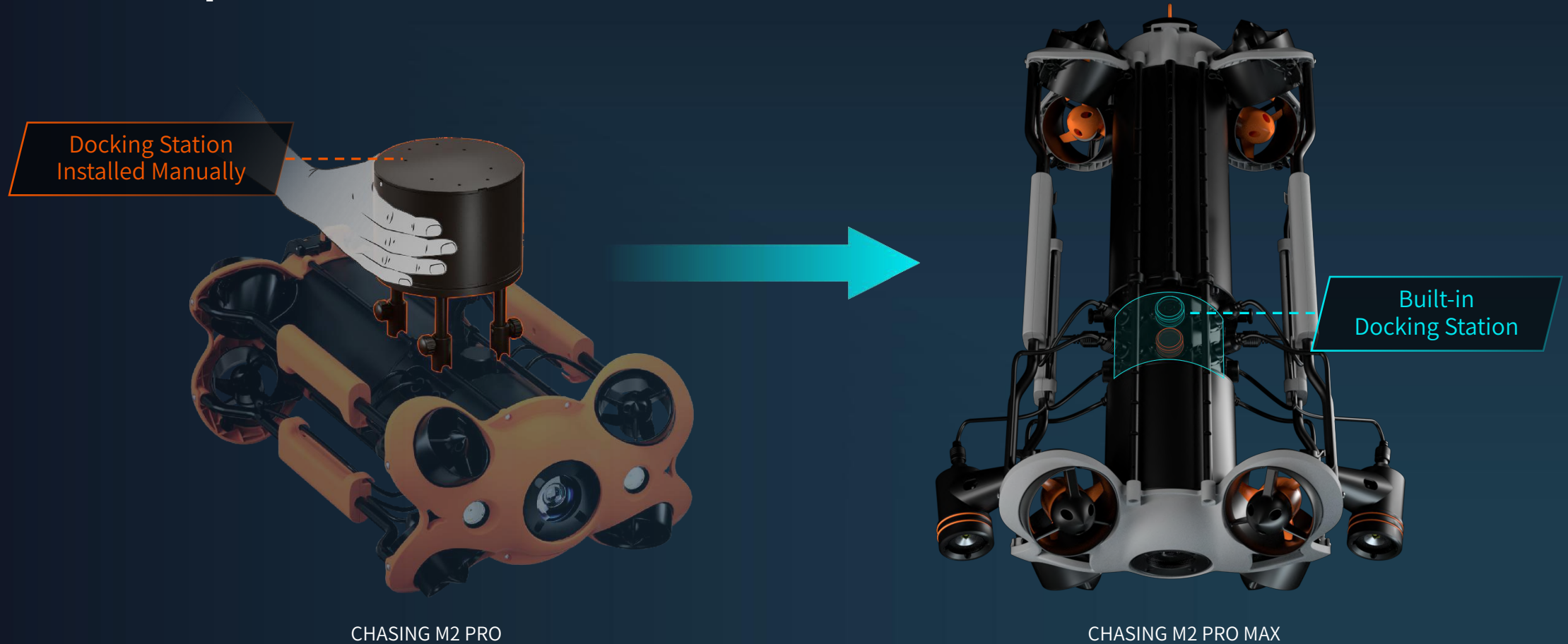
reddot winner 2023

Easy and Convenient Assembly and Disassembly

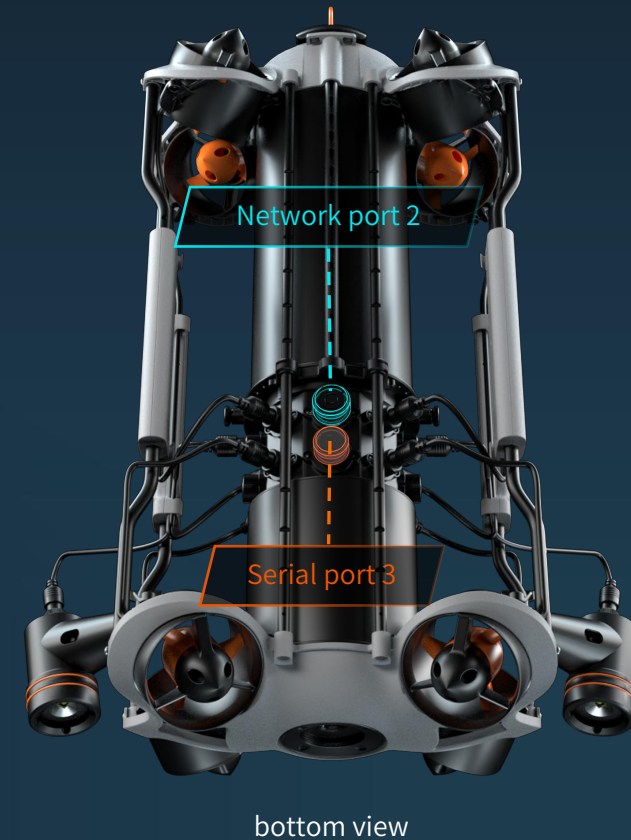
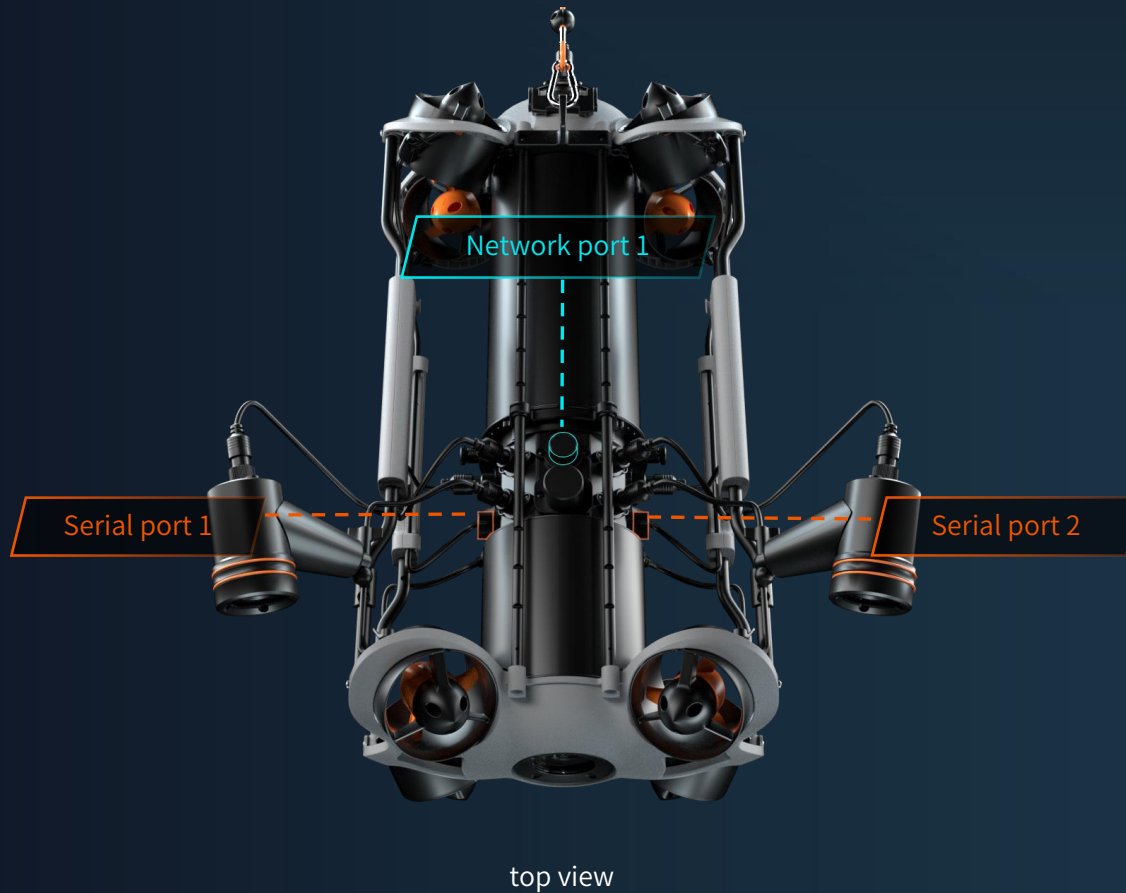
The Quick Accessory Assembly and Disassembly Technology allows you to install accessories on the ROV by combining the **slide-in mounting platform** and the ROV support rod. The process is convenient and reduces assembly and disassembly time and effort.



Five Ports Integrated Simplifies the Installation of Multiple Accessories



The docking station is integrated into the ROV, simplifying the installation of multiple accessories. The new layout of the five reserved ports supports up to five accessories at a time.



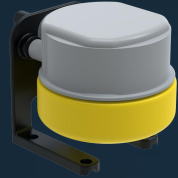
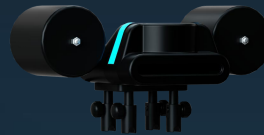
More than 20 innovative CHASING accessories and third-party software and hardware can be installed for extensions.



LASER Scaler



Auxiliary Camera

DISTANCE
LOCK SONAR

Imaging SONAR



WaterLinked DVL



Adapter Box



WSRC



USBL



Grabber Arm 2



Control Console



Multiparameter Sonde



C-SPSS



500ml Water Sampler

Underwater search
& rescue



Hull & Dock
inspection



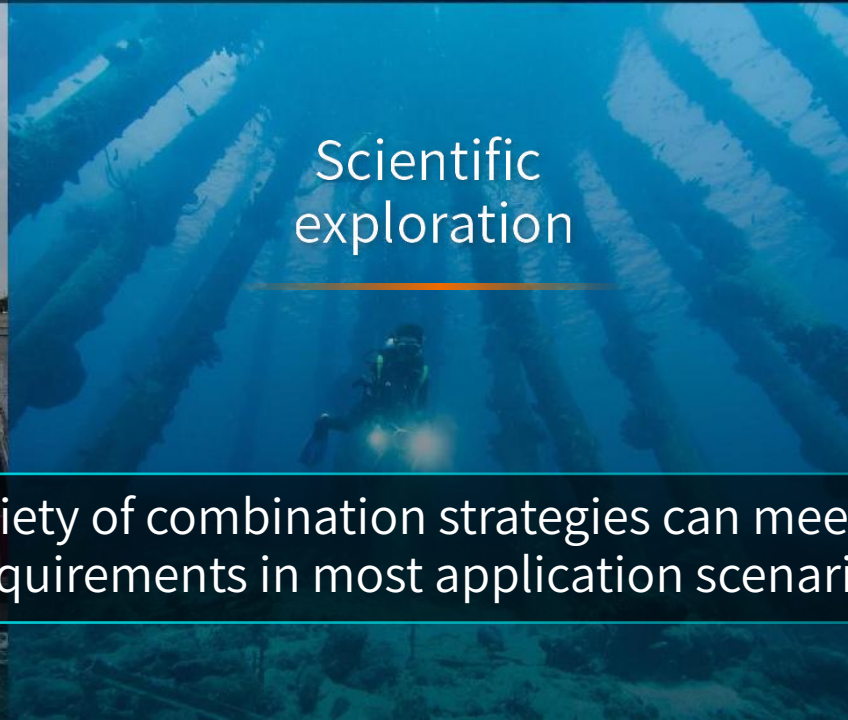
Aquaculture
inspection



Water conservancy and
hydropower inspection



Scientific
exploration



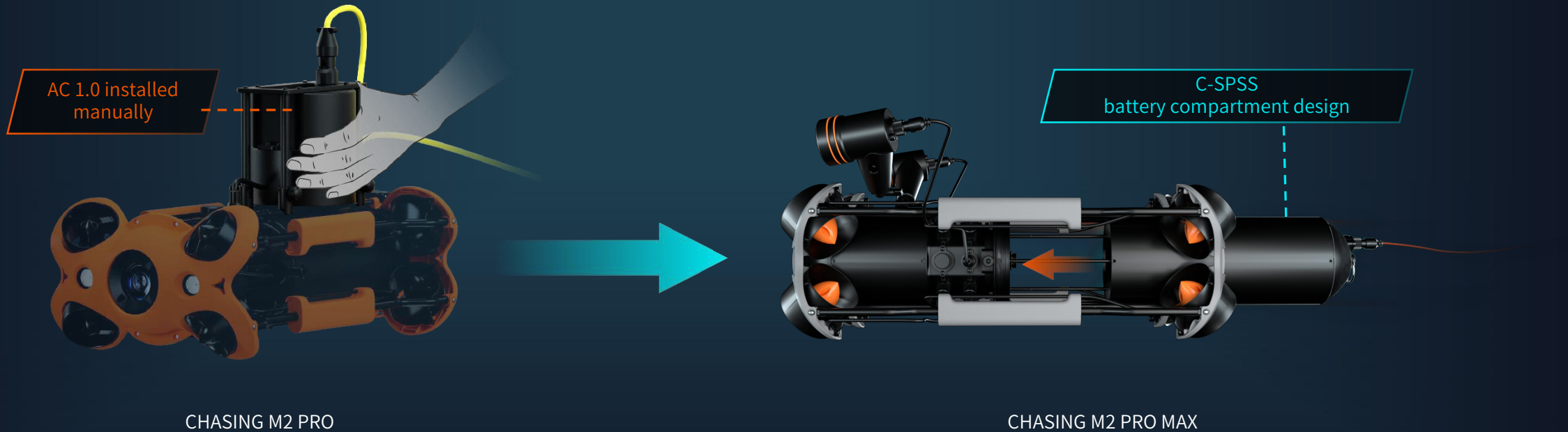
Inspection of offshore
wind power facilities



A variety of combination strategies can meet your requirements in most application scenarios.

CHASING Shore-Based Power Supply System (C-SPSS) Enables 24/7 Missions

CHASING shore-based power supply system (C-SPSS) adopts a battery compartment design, which can achieve an easier installation.



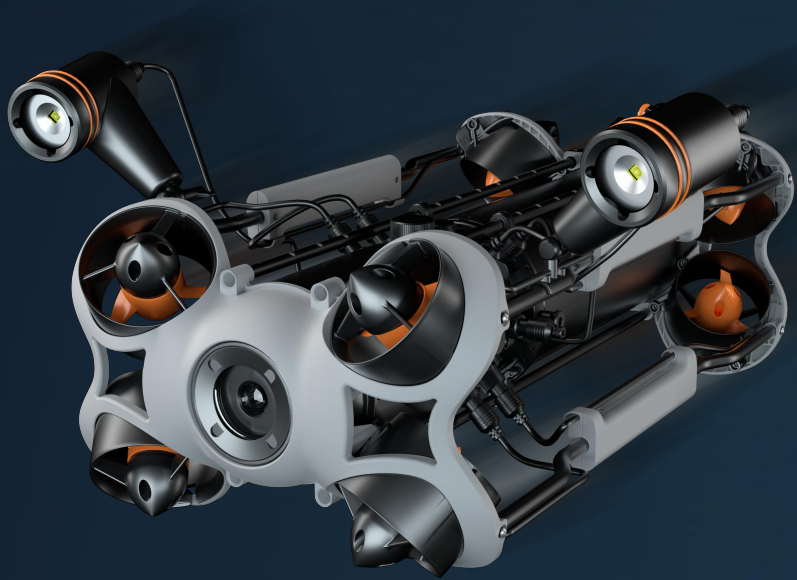
CHASING Shore-Based Power Supply System (C-SPSS) Enables 24/7 Missions

C-SPSS output power is increased to 1500W, ensuring that the ROV can work 24/7 at full power without an outage.



Optional

CHASING C-MOTOR 2.0 Enhances Power and Reliability



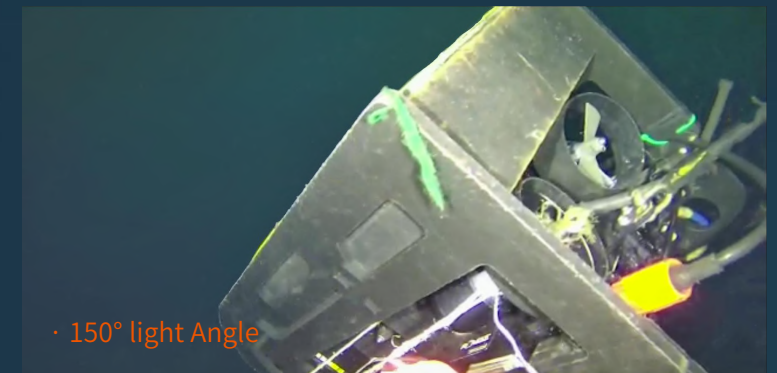
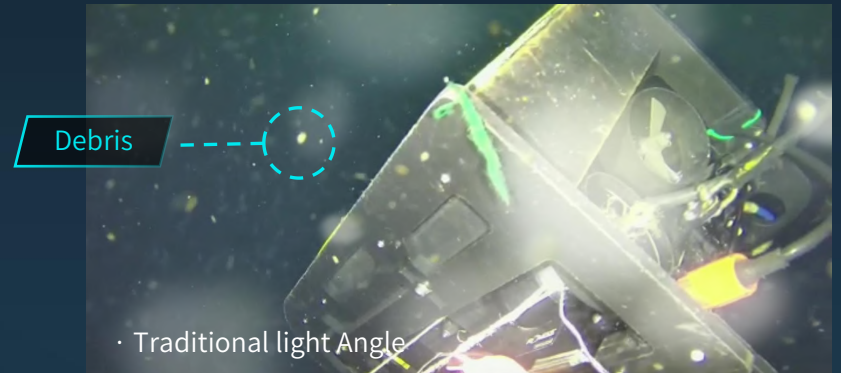
8 thruster vector layout, using new materials, new technology, fluid design, power increased by 30%.



The anti-stuck performance is improved, making the ROV easier to clean and more reliable.

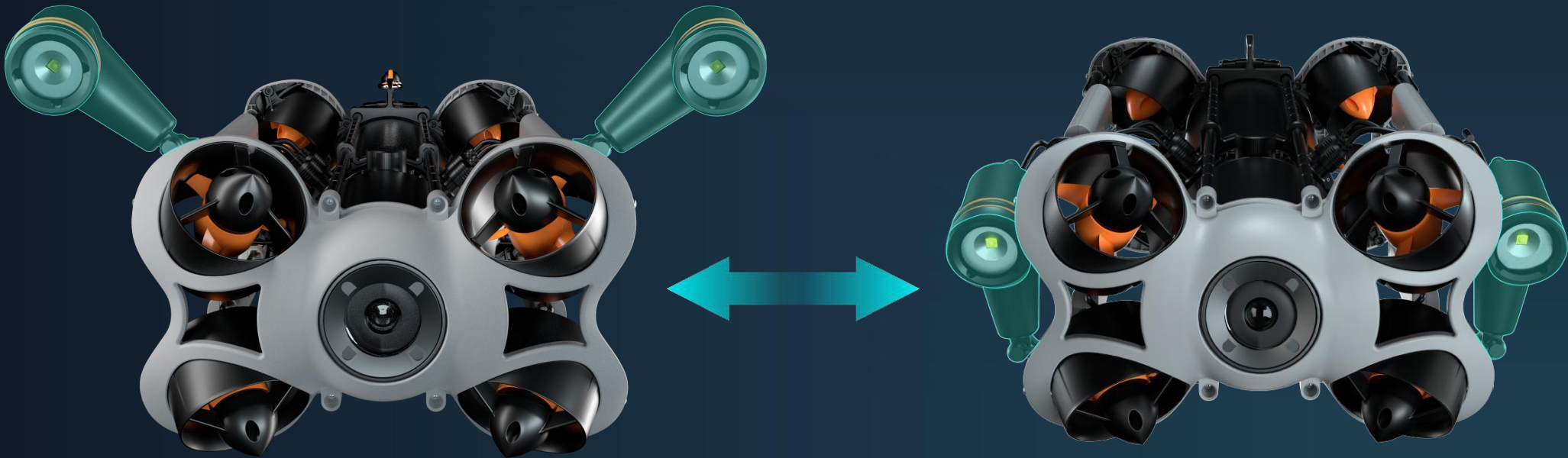
External Floodlights Illuminate Every Detail

Two external floodlights can provide a sum of 8000 lumens' illumination and achieve the best beam angle at 150°, which can resolve the visual interference caused by the reflection of floating debris. This feature also allows stepless adjustment of brightness in the range of 0-100%, allowing the ROV to illuminate each detail in the underwater environment as needed.



External Floodlights Illuminate Every Detail

The floodlights can work folded or unfolded underwater, meeting various needs for complicated underwater application scenarios.



200m Depth Rating for a Broader Operating Range

M2 PRO MAX can dive up to 200m (656ft) with a maximum horizontal radius of 400 meters (1312ft). Combining with different lengths of tether cables, it can work in a broader range and meet more needs of underwater applications.



Maximum diving depth
200 meters

Maximum activity radius
400 meters

4K+EIS Image Stabilization, F2.8 Aperture

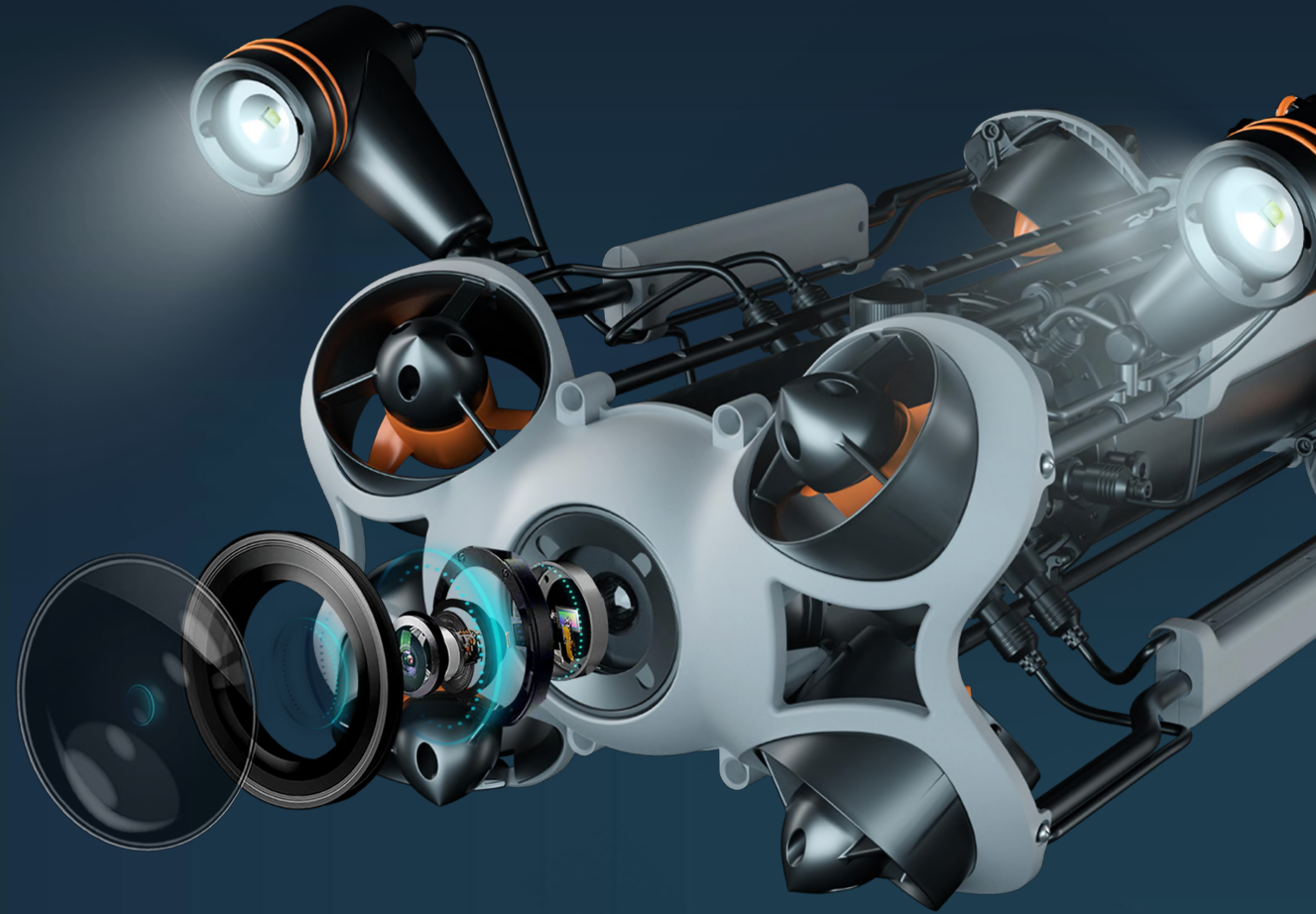
M2 PRO MAX supports 4K video resolution and 12-megapixel photos. It is equipped with 1/2.3" CMOS and EIS anti-video-shake feature, allowing you to capture every underwater detail.

4K and 1080p video

12 megapixel photos

1/2.3" CMOS

EIS anti-video-shake feature



Removable Micro SD memory card

Download your works anytime and anywhere

The default 128G Micro SD memory card is removable. Users can choose micro SD cards with different capacities (up to 512G).

Default 128GB SD memory card

Maximum 512GB



Product Parameters

ROV	SIZE (mm)	608x294x196	fill lights not included
	WEIGHT	8KG	
	MAX DEPTH	200m	
	Runtime Actual duration is subject to the App prompt	4h	
	BATTERY	300Wh	Optional battery
	Operating Temperature	-10 ~45	
	Load(forward/upward/sideways)	5.7/4.0/3.6kg	
CAMERA	CMOS	1/2.3"CMOS	
	LENS	F2.8	
	FOCUS	0.3m ~	
	ISO RANGE	100-6400	
	FOV	150°	
	MAX RESOLUTION	12 Meg Pixel	
	FORMAT	JPEG/DNG	
	VIDEO	4K 3840×2160@25/30fps	
		1080P 1920×1080@25/30/50/60/100/120fps	
		SLOW MOTION4X	1920×1080@30fps 120fps
		SLOW MOTION8X	1280×720@30fps 240fps
	VIDEO STREAM	60M	
	VIDEO FORMAT	MP4	
	SD Card Standard	128G	

Remote Controller	Size(mm)	160*155*125mm
	Weight	685g
	Battery capacity	2500mAh
	Battery life	6H(Depend on working condition)
	Wireless	Wi-Fi
	Wired interface type	Lightning Micro USB USB-C
	HDMI	Support
	Phone/tablet clip	Supports up to 10 inches
SENSOR	IMU	Three-axis gyroscope/acceleration/compass
	Depth Sensor	±0.25m
	Temperature Sensor	±2
CHARGER	POWER	25.2V/8A
	ROV CHARGING TIME	2.5H
	RC CHARGING TIME	2H
LED	BRIGHTNESS	2x4000 LM
	COLOR TEMPERATURE	5000K~5500K
	CRI	85
	DIMMING	THREE GEARS

*For product information, please refer to the actual products on the market.
For the latest information, please refer to the official website:www.chasing.com

CHASING

CHASING M2 PRO MAX

Industrial-Grade Underwater Drone

Easy / Powerful

